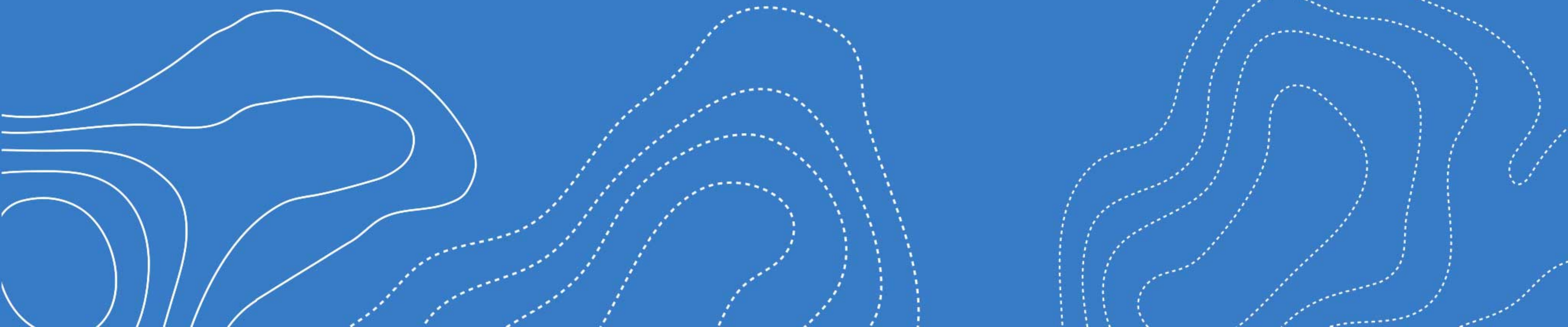




# DataShed5

## v2.3.3



# DataShed Software Release

## maxgeo Data Schema

- Production and Geotech
- Bugs and Enhancements

## DataShed4

- Move DS4 Functionality into DS5
- Bugs and Enhancements

## DataShed5

- QAQC Module
- Data Validation
- Land Monitoring and Reporting
- Improved Spatial Functionality
- Striplog
- Sample Dispatch

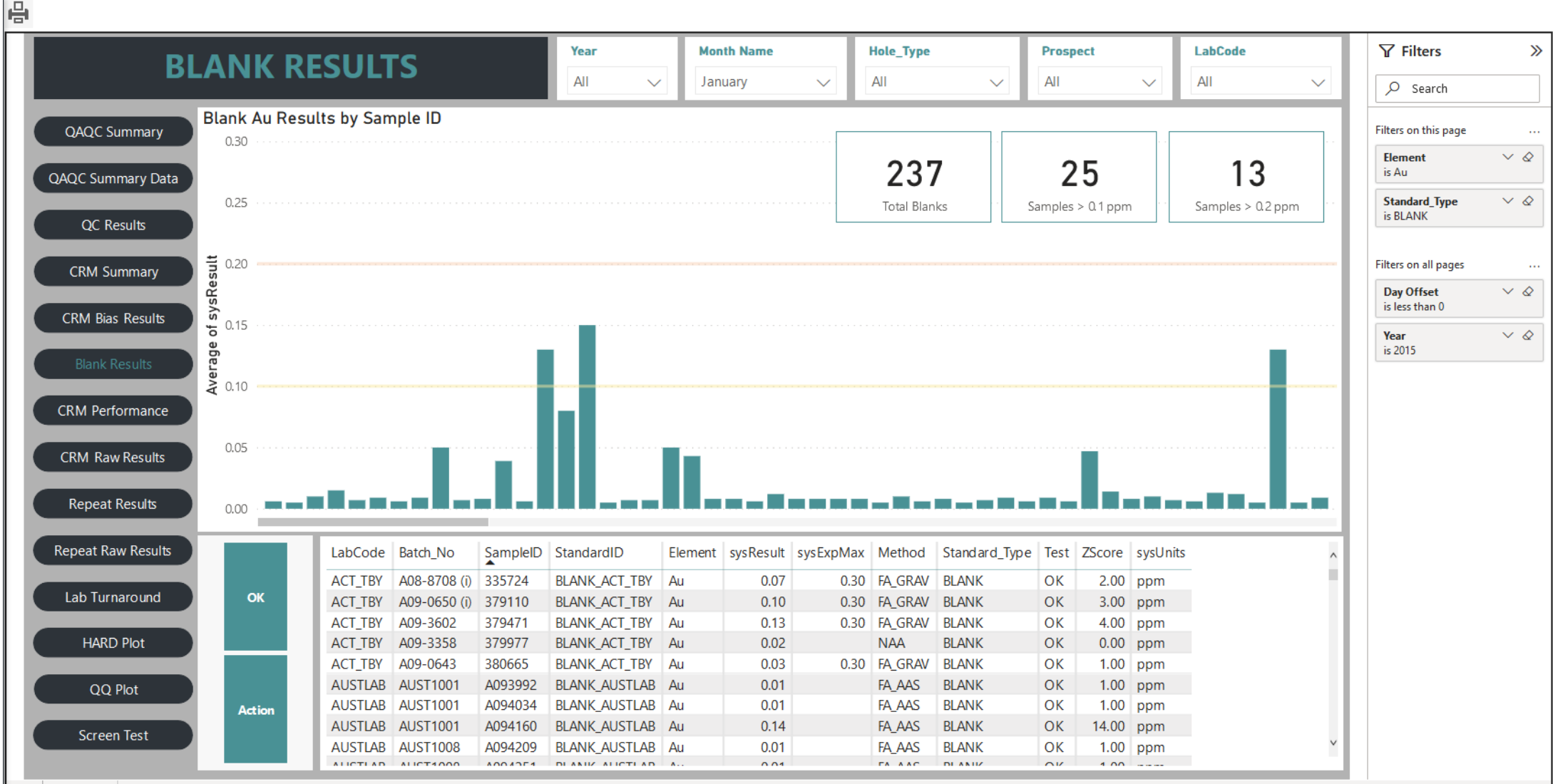
Our future development focus is on DataShed 5. The release is focused on improving end user functionality. Real time access to visualization, data and reporting. To achieve we start to embed data science into the application.

- Development is aligned with
  - Enterprise- wide data management
  - Automation, Integration,
  - Real time access
  - Data spatially located
- Features included
  - Import and export layouts
  - Land Monitoring
  - QAQCR
  - Numerous PowerBI reports

# Map Enhancements

The screenshot displays the DataShed5 web application interface. On the left is a sidebar menu with the following items: 'Hello kghanwat', 'DataSet Manager', 'Cascade Filters', 'View Data', 'View Map', 'Reports', 'Power BI Reports', 'Dashboards', 'Download Data', 'Intercept Calculator', 'Activity', and 'Sample Dispatch'. The 'maxgeo' logo is at the bottom of the sidebar. The main map area shows a topographic map with several data layers overlaid in blue and green. Labels on the map include 'Kalgoorlie', 'Kurrawang community', 'Coolgardie', and 'Kambalda West'. A toolbar at the top of the map contains various navigation and interaction icons. On the right side, a 'Map Styles' panel is open, showing the following settings:

- Light Mode: OFF
- Heat Map: OFF
- Terrain Mode: OFF
- Layer opacity: 100%
- Bouger Gravity
- Magnetic
- Radiometric
- WA-80M-RTP
- WA-80M-VD
- WA-Kalgoorlie
- WA-PS



Filters on this page

Element  
is Au

Standard\_Type  
is BLANK

Filters on all pages

Day Offset  
is less than 0

Year  
is 2015

# Striplog

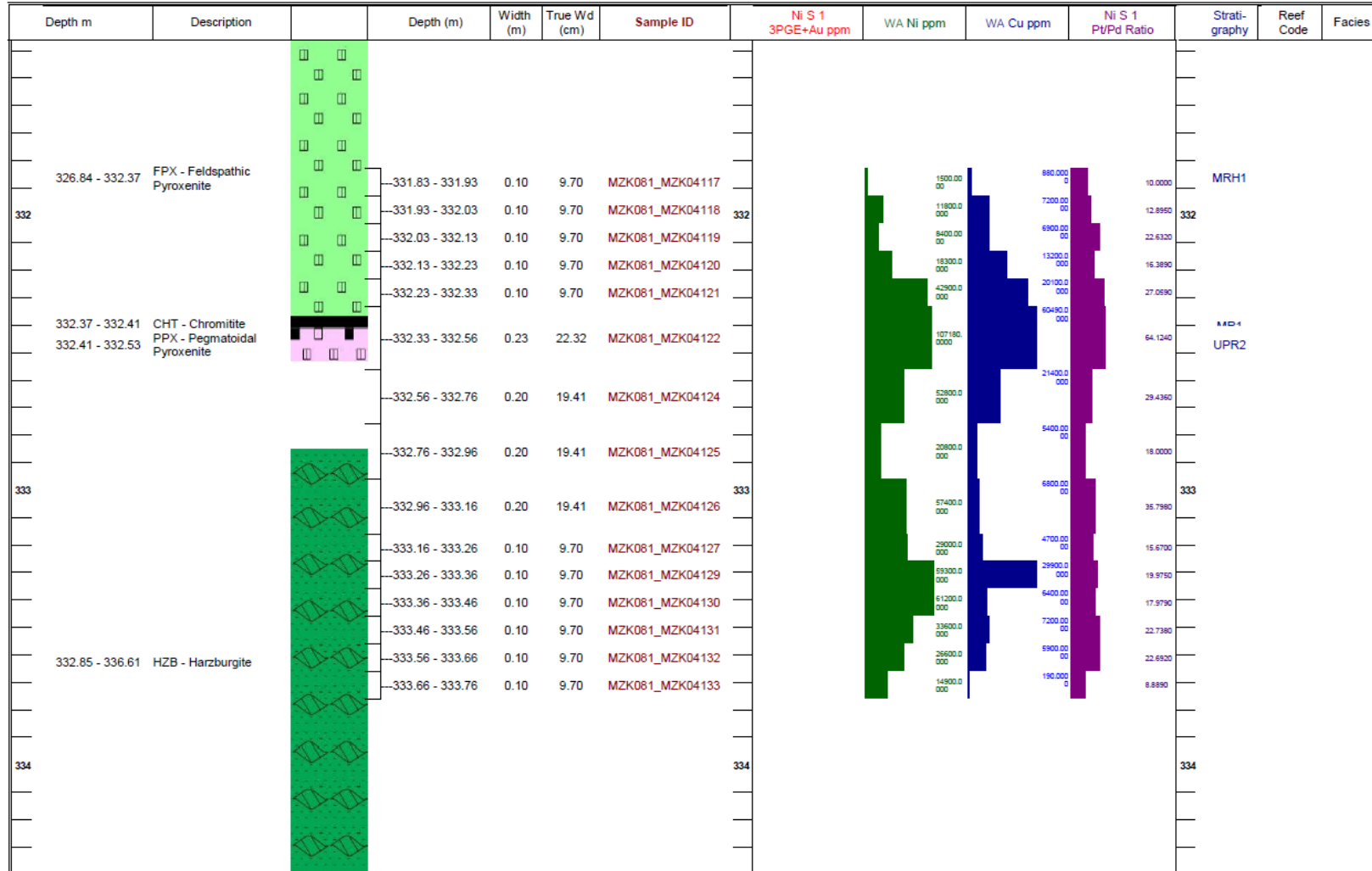
Location: SIGNEDOFF\_EXPL  
 BH ID: MZK081\_D0

X: 0.00  
 Y: 0.00  
 Z: 0.00

## ASSAY LOG

Azimuth: 0  
 Inclination: 0

Projection: NR  
 E O H: 388.18m



# Production

Integrated Production Data Management  
empowering open pit and underground operations

**max**  
**geo**

DAILY REPORT

PHYSICALS

JUMBO & LONG HOLE

ORE TRUCKING

STOPE FILLING

DEV & DRILL METRES

ORE TONNES & CONT. AU

TOTAL MATERIAL

TOTAL EQUIPMENT DOWNTIME

PRODUCTION EQUIPMENT  
DOWNTIME

JUMBO OP TRACKER

# Monthly KPI's

## Jumbo and Long Hole

SELECT YEAR

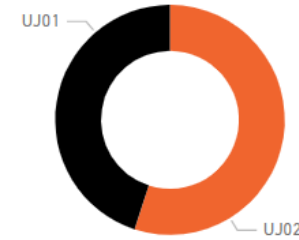
2021



### 1. Jumbo Metres by Machine

EquipmentID	January	February	March	April	May	June	July	August	September	October	November	December	Total
UJ01	15,766	17,694	15,799	13,867	21,454	21,991	25,373	25,407	33,681	28,837	15,643	1,694	237,206
UJ02	27,439	22,324	22,424	14,838	29,807	25,610	29,968	31,157	32,579	34,991	18,913		290,050
<b>Total</b>	<b>43,204</b>	<b>40,018</b>	<b>38,223</b>	<b>28,705</b>	<b>51,261</b>	<b>47,601</b>	<b>55,341</b>	<b>56,564</b>	<b>66,260</b>	<b>63,828</b>	<b>34,556</b>	<b>1,694</b>	<b>527,255</b>

Jumbo Metres by Rig



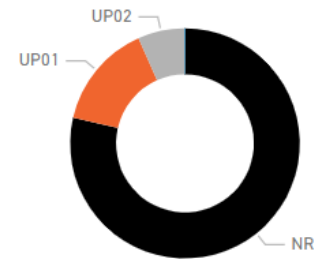
Jumbo Metres by Shift



### 2. Long Hole Drilling Metres

Hole_Type	January	February	March	April	May	June	July	August	September	October	November	December	Total
BLAST	8,587.80	8,850.80	7,708.60	12,117.50	11,742.40	6,788.00	11,569.90	9,551.60	15,570.90	15,420.60	8,249.20		116,111.20
CABLE	340.70		308.90	414.00	724.00	1,256.00	883.30	853.00	367.00	492.00	228.00		5,800.90
CLEAN OUTS	520.30	406.90	1,242.80	485.00	1,552.30	385.20	421.40	267.70	126.00	308.40			5,730.00
DRAIN		70.90			153.50		57.00						281.40
PROBE							30.50	109.40	213.30	368.30		55.00	716.50
SERVICE			94.50	378.00	272.60				398.00				1,073.10
SLUDGE					158.00	23.90				172.00			353.90
<b>Total</b>	<b>9,448.80</b>	<b>9,328.60</b>	<b>9,354.80</b>	<b>13,394.50</b>	<b>14,602.80</b>	<b>8,453.10</b>	<b>12,962.10</b>	<b>10,781.70</b>	<b>16,675.20</b>	<b>16,761.30</b>	<b>8,477.20</b>	<b>55.00</b>	<b>130,211.20</b>

Long Hole Metres by Rig



Long Hole Metres by Shift



### 3. Long Hole Drilling Metres by Machine

EquipmentID	January	February	March	April	May	June	July	August	September	October	November	December	Total
NR	591.60	236.90	1,123.50	13,394.50	14,602.80	8,453.10	12,718.40	9,530.40	16,675.20	16,761.30	8,343.20		102,430.60
UP01	6,961.40	6,540.90	4,222.40				243.70	1,251.30					19,219.70
UP02	1,895.80	2,550.80	4,008.90									55.00	8,454.50
UP03											134.00		134.00
<b>Total</b>	<b>9,448.80</b>	<b>9,328.60</b>	<b>9,354.80</b>	<b>13,394.50</b>	<b>14,602.80</b>	<b>8,453.10</b>	<b>12,962.10</b>	<b>10,781.70</b>	<b>16,675.20</b>	<b>16,761.30</b>	<b>8,477.20</b>	<b>55.00</b>	<b>130,211.20</b>

