

DataShed Extensions Quick Guide

November 2021

*All content in this document is Copyright and all rights reserved,
content should not be copied, adapted, redistributed, or otherwise
without the prior permission of maxgeo Pty Ltd*

Contents

CONTENTS	2
1.0 QUICK GUIDE	3
2.0 SETTING UP	3
3.0 USING DATASHED EXTENSIONS.....	5
4.0 REFRESHING EXTENSIONS	6
5.0 FURTHER INFORMATION	7

Version History

Version	Date	Person	File Name
1.0	Nov 2021	S Dexter	DataShed Extensions Quick Guide

1.0 Overview

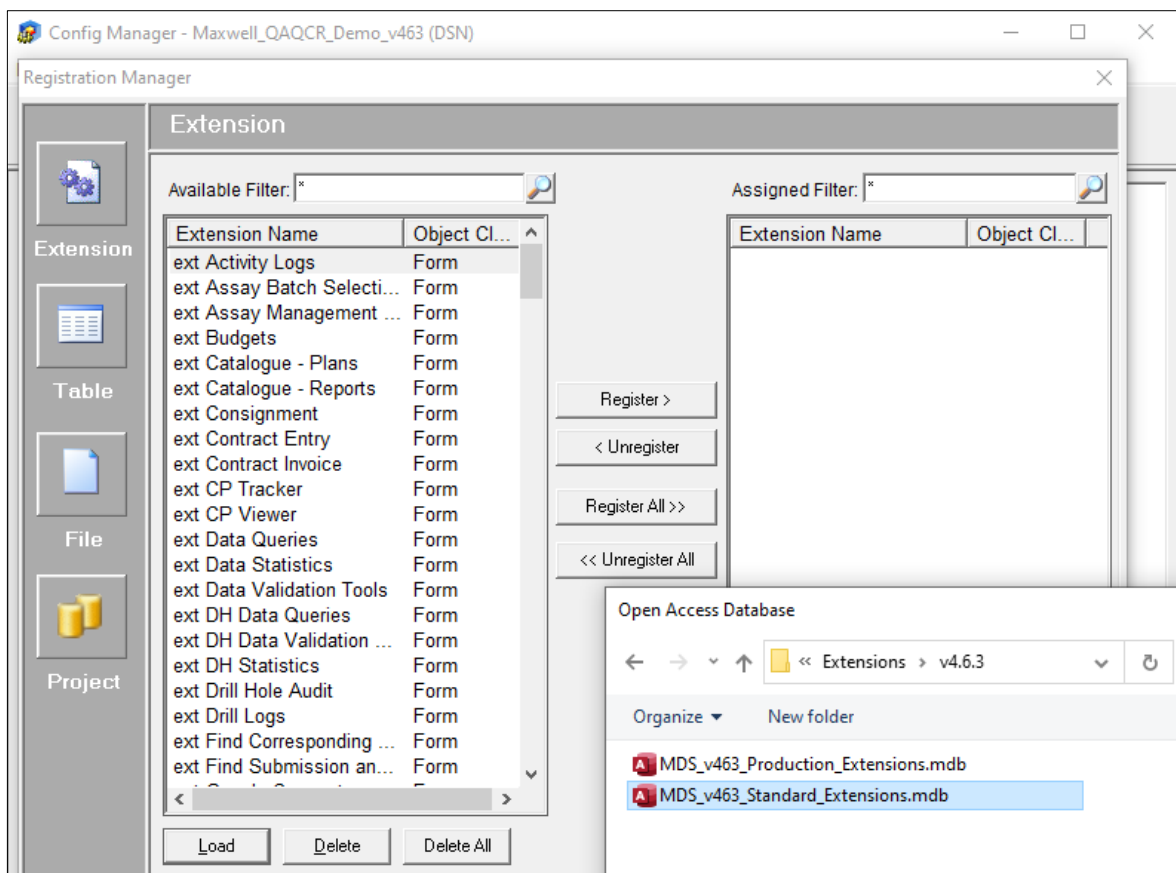
DataShed Extensions are a suite of apps including Data Validation, Assay Management and Contract Management tools that provide rich functionality for users of DataShed.

These standard extensions are matched to the client maxgeo Data Schema (MDS) version and are included with all DataShed4 installations.

2.0 Setting up

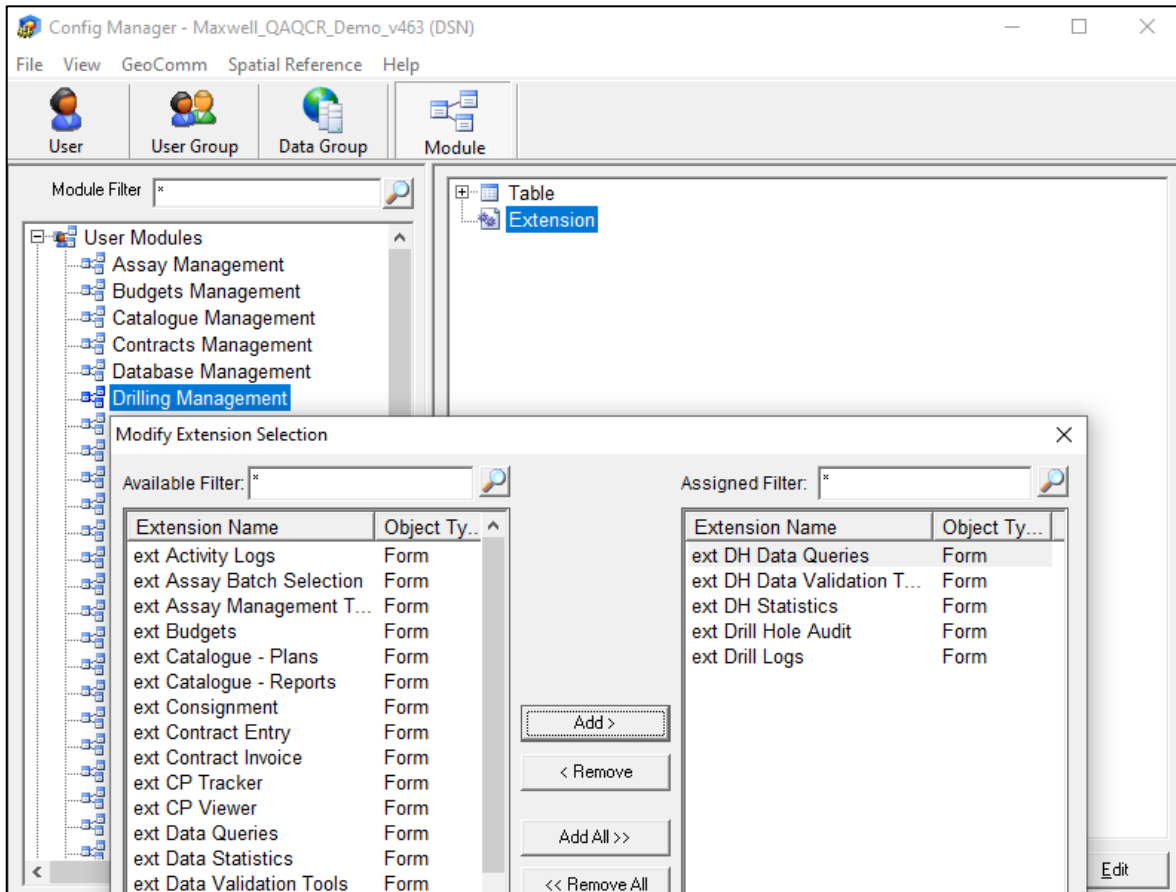
The DataShed Extensions first need to be registered for use with DataShed4.

- a) Copy the Extension file (eg MDS_v46x_Standard_Extensions.mdb) to a central network location accessible to all DataShed4 users.
- b) Open ConfigManager, choose View > Registration Manager then Load.
- c) Navigate to the Extension file and all extensions will be loaded into the left panel.
- d) Click Register All and all extensions will register and move to the right panel.



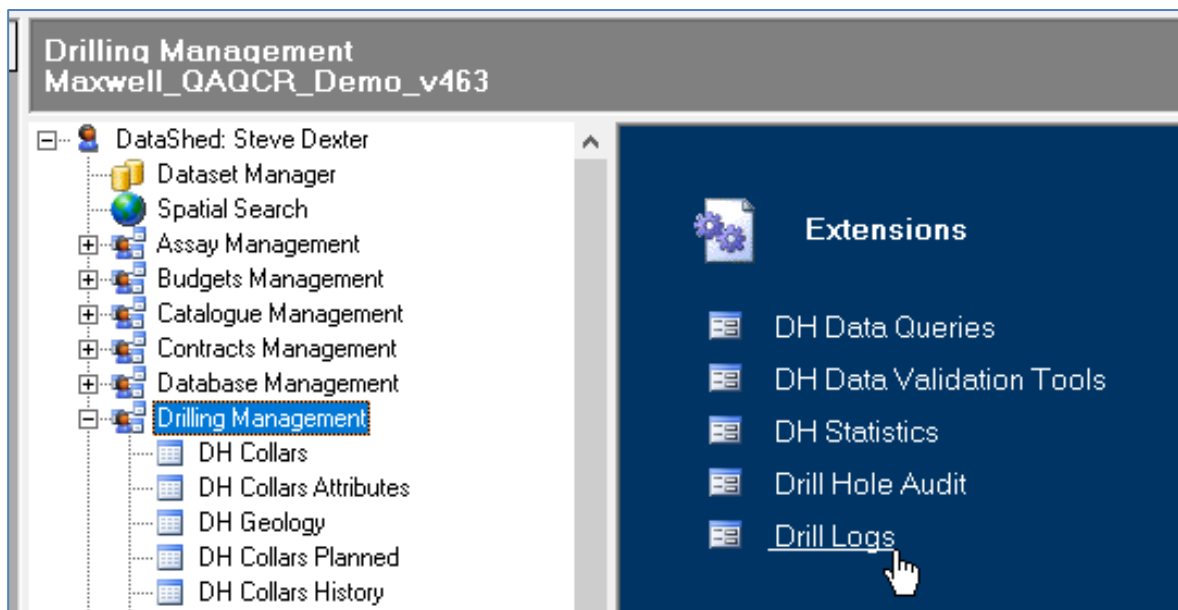
Next add the extensions to the DataShed4 Module/s to make them visible in DataShed4.

- a) Choose the Module Button and select the User Module in the left panel that you want to assign the Extensions to.
- b) Right click on the Extension folder in the right panel and choose Edit.
- c) Select the Extension/s you want to assign to the module and choose Add/Add All.
- d) The added Extensions will move to the right panel and list in the Extensions folder.



3.0 Using DataShed Extensions

The Extensions can now be found in DataShed4 listed under the module they were assigned to.



Some of the standard extensions included with all DataShed4 installations:

Drilling Management Tools

- Drill Hole Data Queries
- Drill Logs
- Drill Hole Statistics
- Drill Hole Audit
- Drill Hole Data Validation Tools
- Core Photo Tracker and Viewer

Point Sampling Management Tools

- Point Samples Statistics
- Point Samples Data Queries
- Point Samples Data Validation Tools

Sample Management

- Sample Dispatch and Reconciliation
- Sample Submission to Consignment
- Where is my Sample

Assay Management Tools

- Assay Batch Selection
- Assay Management Tools
- Lab QC Manager
- Lab Turnaround Time

Contract Management Tools

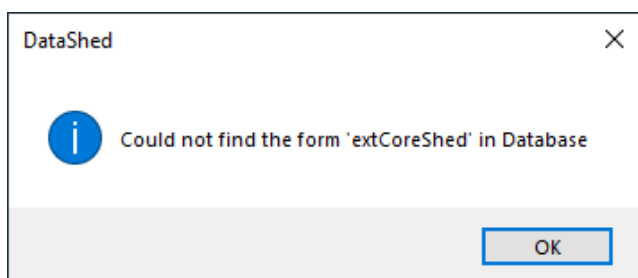
- Drill Plods / Logistics

Database Management Tools

- Catalogue – Plans and Reports
- Periodical Reporting
- Rehabilitation
- Meetings
- Incidents

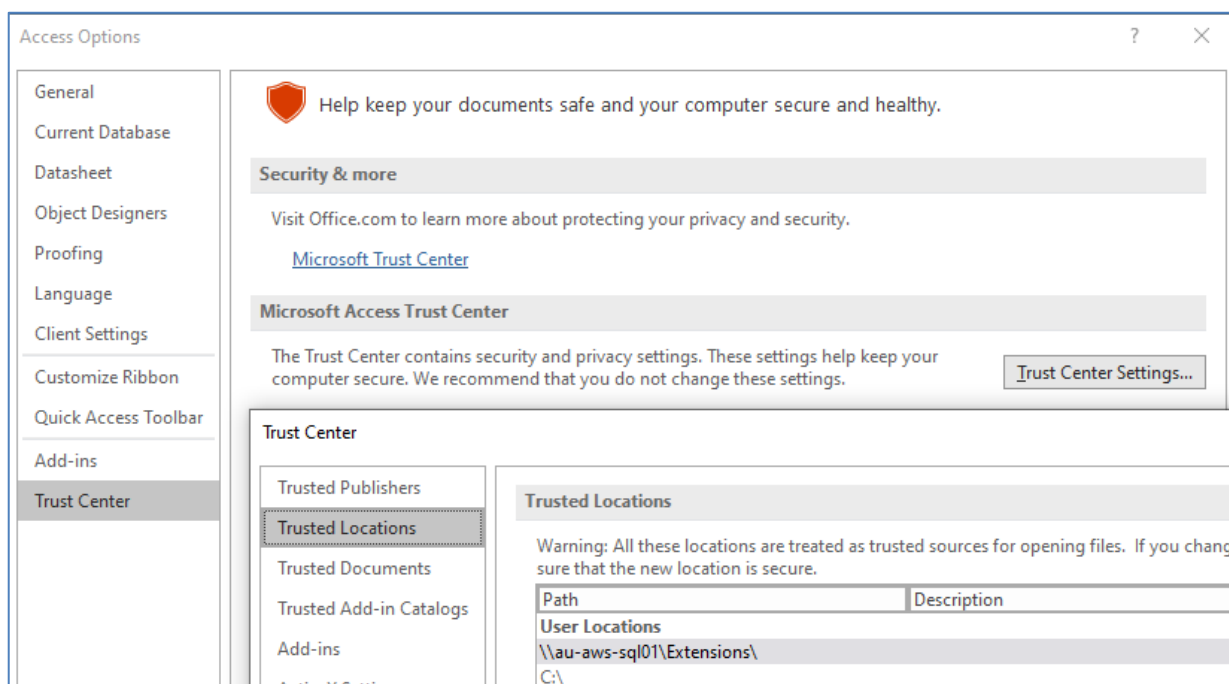
4.0 Refreshing Extensions

If DataShed4 displays an error when you click on an Extension link you will need to Refresh Extensions.



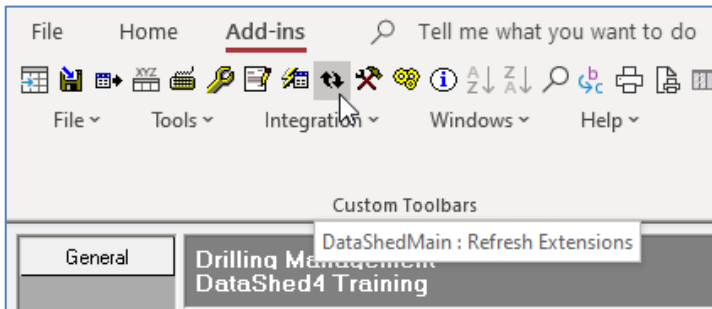
Before doing a refresh ensure the security settings in Microsoft Access are correctly configured to prevent warning message pop ups during the refresh. Check the location of the DataShed Extensions file is listed as a Trusted Location in Access.

- a) Go to File > Privacy Options > Trust Center and click on the Trust Center Settings... button.
- b) Check that the location of the DataShed Extension file is listed under Trusted Locations and if not click the Add New Location button and add it.



Note: depending on your network security settings you may need to tick the Allow Trusted Locations on my network tick box.

To Refresh Extensions, click on the icon in the tool bar. Be aware the refresh may take several minutes especially if you have an older version of DataShed.



5.0 Further Information

DataShed Extensions are customisable by both maxgeo and client Data Administrators. Customisations and other Extensions, such as Production Extensions (for Production MDS databases) and DMP Government Reporter, are available by contacting maxgeo at servicedesk@maxgeo.com.

The location details for DataShed Extensions are stored in the MDS in the tblSYSExtensions table.

- dbo.tblSYSExtensions
- dbo.tblSYSExtSQLStatement
- dbo.tblSYSExtFilter
- dbo.tblSYSExtFilterItem
- dbo.tblSYSExtFilterList
- dbo.tblSYSExtFilterType
- dbo.tblSYSGCOMDBCat
- dbo.tblSYSGCOMDBCatParam
- dbo.tblSYSGCOMFcatAlias
- dbo.tblSYSGCOMObjectClass
- dbo.tblSYSGCOMObjectClassField
- dbo.tblSYSGCPackage
- dbo.tblSYSGImportFileType
- dbo.tblSYSGImportFileList
- dbo.tblSYSGImportFileFiles
- dbo.tblSYSGImportLayout
- dbo.tblSYSGImportLayoutFields

ID	ObjectName	ObjectType	Description	UNCPath	SourceDB	Notes
1	1047 ext Activity Logs	Form	Activity Logs	C:\Extensions\v4.6.3\	MDS_v463_Standard_Extensions.mdb	NULL
2	1046 ext Assay Batch Selection	Form	Assay Batch Selection	C:\Extensions\v4.6.3\	MDS_v463_Standard_Extensions.mdb	NULL
3	1045 ext Assay Management Tools	Form	Assay Management Tools	C:\Extensions\v4.6.3\	MDS_v463_Standard_Extensions.mdb	NULL
4	1044 ext Budgets	Form	Budgets	C:\Extensions\v4.6.3\	MDS_v463_Standard_Extensions.mdb	NULL
5	1043 ext Catalogue - Plans	Form	Catalogue - Plans	C:\Extensions\v4.6.3\	MDS_v463_Standard_Extensions.mdb	NULL
6	1042 ext Catalogue - Reports	Form	Catalogue - Reports	C:\Extensions\v4.6.3\	MDS_v463_Standard_Extensions.mdb	NULL
7	1041 ext Consignment	Form	Consignment	C:\Extensions\v4.6.3\	MDS_v463_Standard_Extensions.mdb	NULL
8	1040 ext Contract Entry	Form	Contract Entry	C:\Extensions\v4.6.3\	MDS_v463_Standard_Extensions.mdb	NULL

If you need further assistance on any aspect of your data management system, please contact the maxgeo Support Team servicedesk@maxgeo.com