



LogChief 3.2 Short Install Guide

August 2021

Version History

Version	Date	Person	File Name
1.0	August 2021	T. Scott	LogChief 3.2_ShortInstallGuide

Contents

CONTENTS	3
1.0 PREREQUISITES.....	4
2.0 INSTALLATION	4
2.1. LogChief 3.2	4
3.0 FIRST RUN.....	7
3.1. Licensing	7
3.2. LogChief System Database	7
3.3. Import LogChief Configuration	8
4.0 SUPPORT	9

This is an abbreviated installation guide. Please refer to the full installation and user manual located in the application installation file for the complete installation and configuration guide.

1.0 Prerequisites

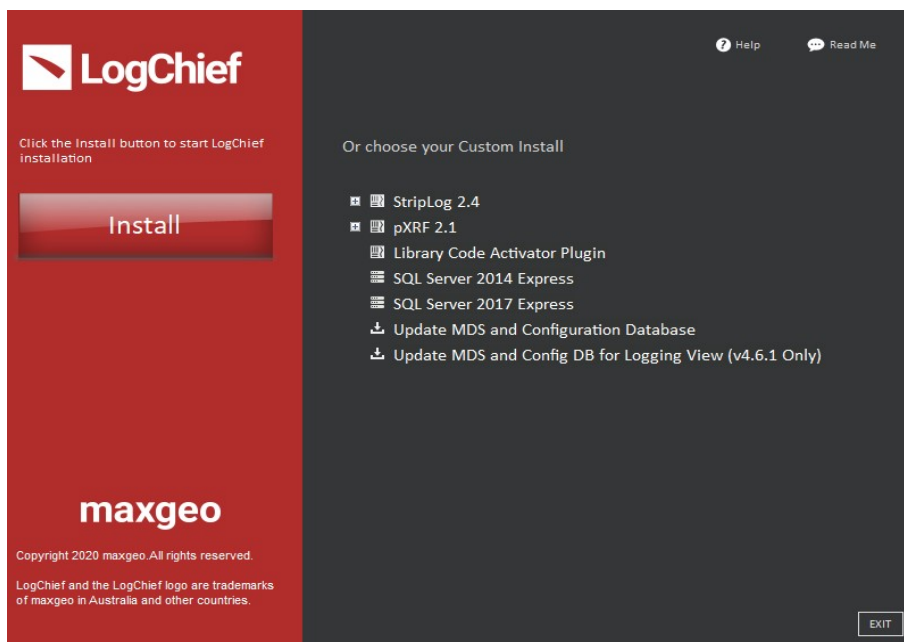
Prior to the installation of LogChief ensure that SQL Server with the same version and Collation as your MDS SQL Server and SQL Server Management Studio have been installed.

The Installation of LogChief is to be performed using the same windows user account as the installed SQL Server.

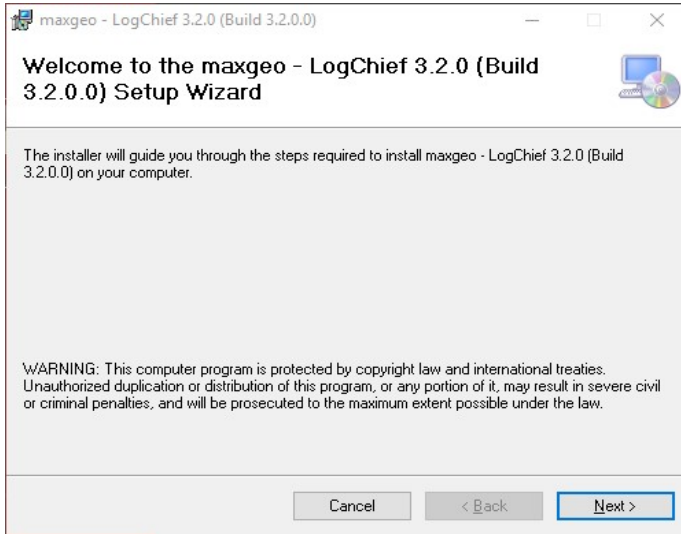
2.0 Installation

2.1. LogChief 3.2

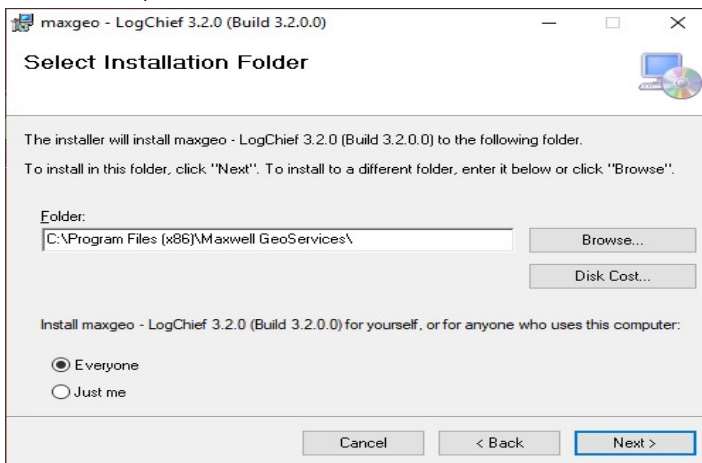
1. Launch the LogChief Installation Package for the installer provided by maxgeo. Click the **Install** button to start LogChief 3.2 installation.



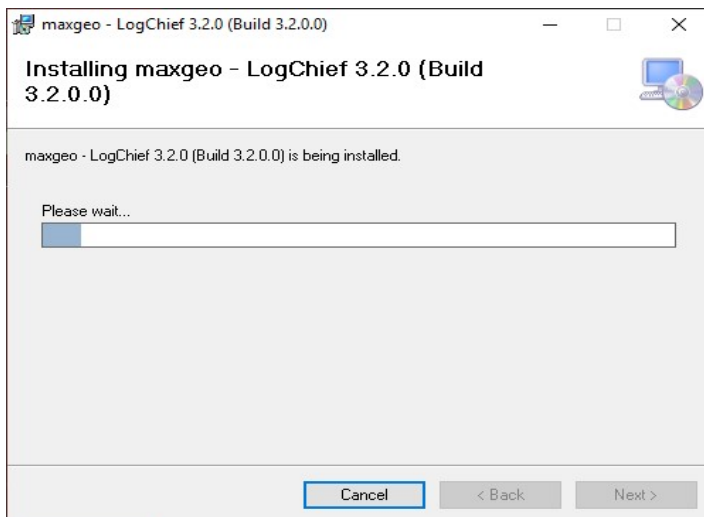
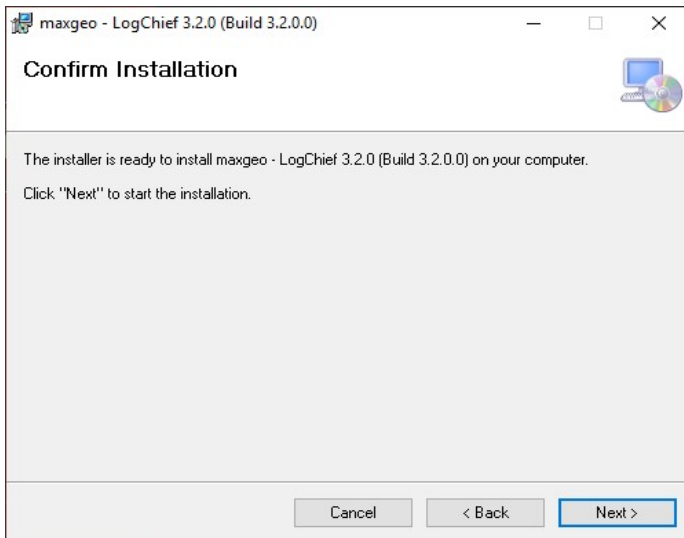
2. Initial Screen, Click **Next** to continue



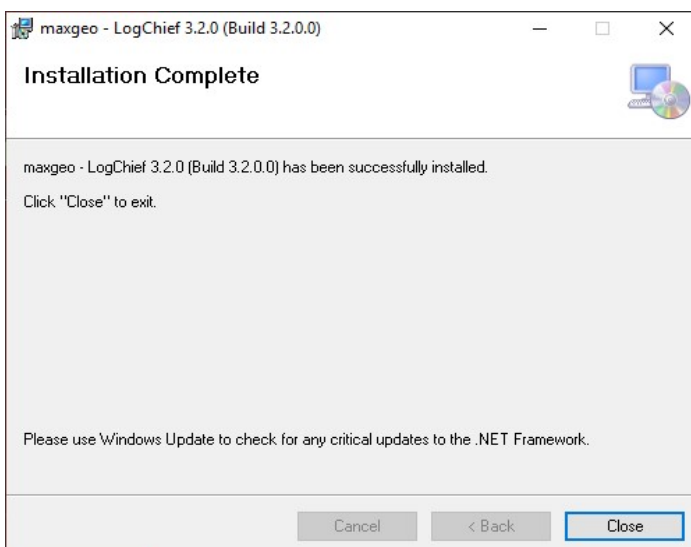
3. Select the path to install the application to and click **Next**. We recommend you keep the default installation path



4. After specifying all the installation settings, you will see this final screen before installing LogChief. Click **Next** to proceed



5. Click **Close** to complete the installation.



3.0 First Run

When running LogChief for the first time you will be prompted to license and setup the LogChief System Database

3.1. Licensing

1. Launch the application from the Start menu. The path will be: Start Menu> (All) Programs> maxgeo> LogChief 3.2.0. Ensure it is run for the first time “as Administrator”
2. You will be prompted to enter your LogChief License Key. A unique license key is required for each installation. This license key is supplied by maxgeo

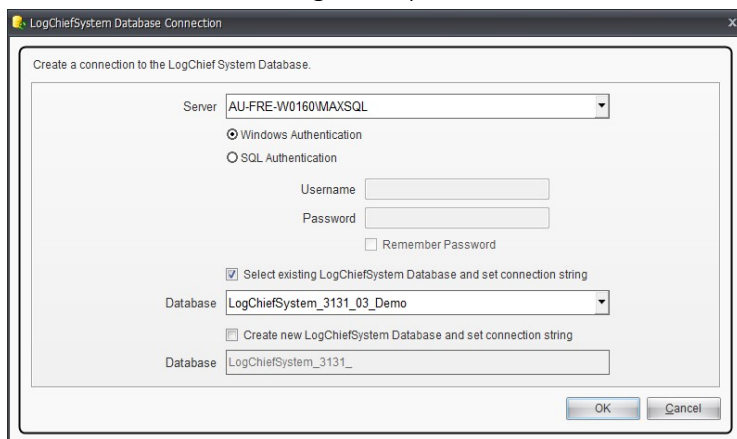


Note: An internet connection will be required to activate the License Key.

3. You will be required to fill out some client information before continuing

3.2. LogChief System Database

After LogChief has been licensed it will prompt with the LogChief System Database Connection window. Enter the local SQL server connection details in the server section
Select the “Create new LogChief System Database and set connection string”

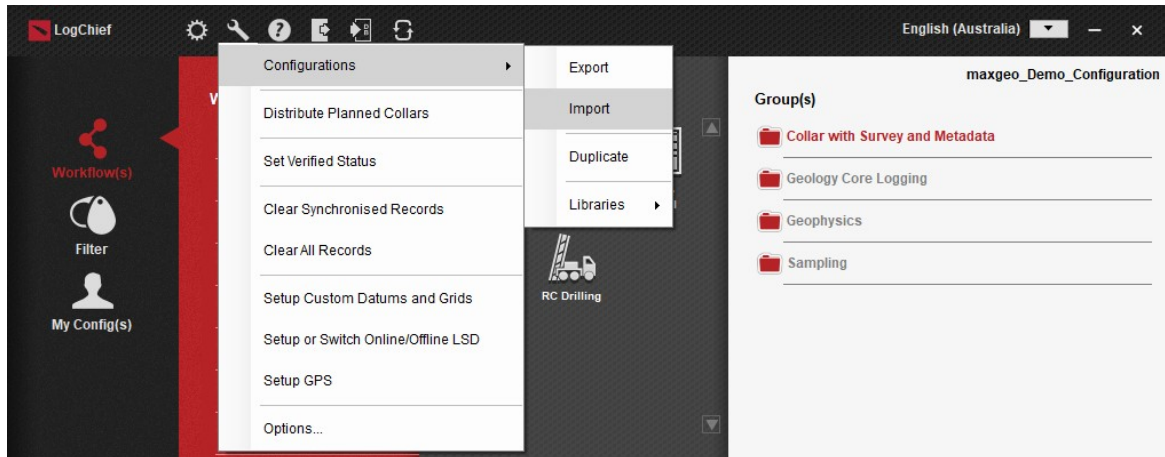


NB: If you do not know your local SQL Server connection settings, please contact your IT for support.

3.3. Import LogChief Configuration

The configuration will be supplied by your maxgeo Database Administrator

To import a Configuration, click on the *Tools > Configurations > Import* menu item in the main window of LogChief to load the Import Tool.



To import a Configuration and the associated Profiles:

1. Select the Configuration (XML file) to import in the Configuration browser
Any Logging Profiles and data files located in the same folder will automatically be selected to import.
2. Press Browse and enter your SQL Server details and select the MDS database from the list

Server

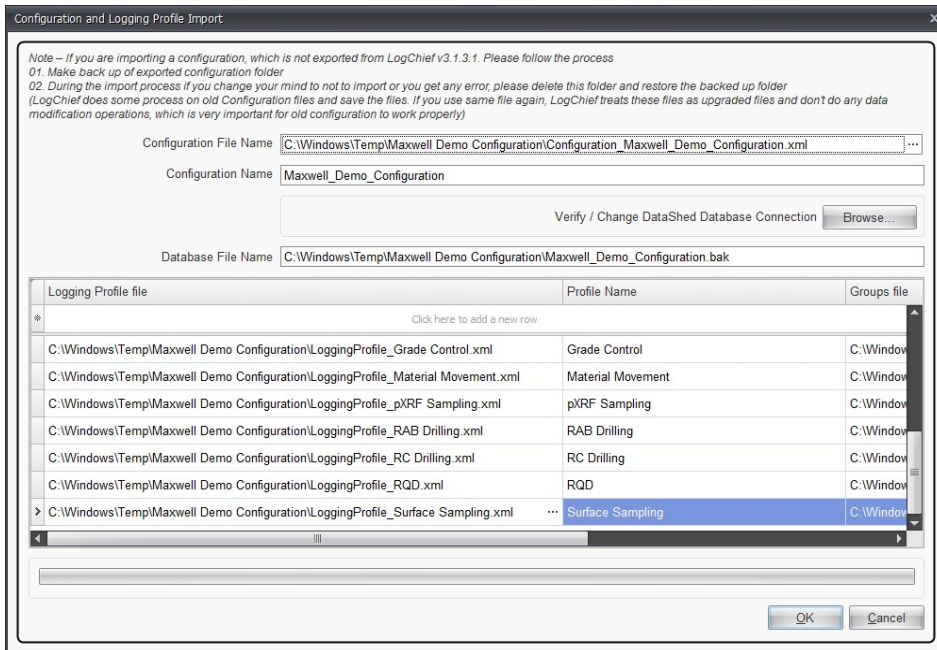
Windows Authentication

SQL Authentication

Username	<input type="text"/>
Password	<input type="password"/>

Database

3. Click Ok to begin the import.



4. Select My Config>Configuration>OK

4.0 Support

If there are any questions or issue with the installation, please do not hesitate to contact your maxgeo DBA or maxgeo support at servicedesk@maxgeo.com